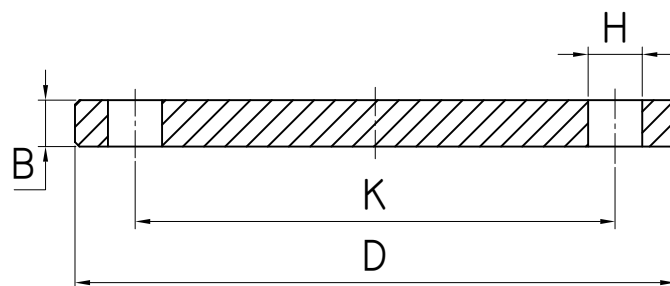


ART. 895#05A16

| DN | D | K | B | H | N. holes |
|-----|-----|-----|----|----|----------|
| 10 | 90 | 60 | 16 | 14 | 4 |
| 15 | 95 | 65 | 16 | 14 | 4 |
| 20 | 105 | 75 | 18 | 14 | 4 |
| 25 | 115 | 85 | 18 | 14 | 4 |
| 32 | 140 | 100 | 18 | 18 | 4 |
| 40 | 150 | 110 | 18 | 18 | 4 |
| 50 | 165 | 125 | 18 | 18 | 4 |
| 65 | 185 | 145 | 18 | 18 | 4 o 8 |
| 80 | 200 | 160 | 20 | 18 | 8 |
| 100 | 220 | 180 | 20 | 18 | 8 |
| 125 | 250 | 210 | 22 | 18 | 8 |
| 150 | 285 | 240 | 22 | 22 | 8 |
| 200 | 340 | 295 | 24 | 22 | 12 |
| 250 | 405 | 355 | 26 | 26 | 12 |
| 300 | 460 | 410 | 28 | 26 | 12 |
| 350 | 520 | 470 | 30 | 26 | 16 |
| 400 | 580 | 525 | 32 | 30 | 16 |
| 450 | 640 | 585 | 40 | 30 | 20 |
| 500 | 715 | 650 | 44 | 33 | 20 |
| 600 | 840 | 770 | 54 | 36 | 20 |



FLANGIA ASTM A182 EN 1092-1 05A PN 16
 FLANGE ASTM A182 EN 1092-1 05A PN 16

TECNICATRE
 Stainless Steel Experience